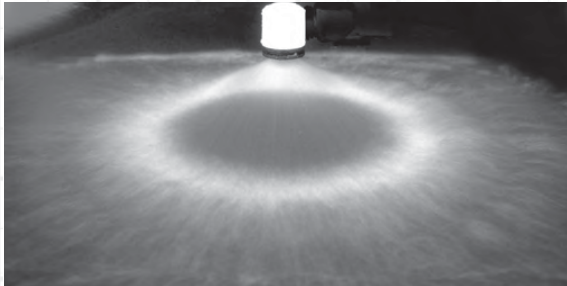


Spray Nozzles

# Hollow Cone Nozzles

Producing fine atomisation with no central distribution\*

TYPICAL SPRAY PATTERN



**TYPICAL APPLICATIONS**

Aerating water, brine sprays, chemical processing, coil defrosting, dust control, evaporative condensers, evaporative coolers, industrial washers, roof cooling, spray ponds, spray coating, gas scrubbing and washing, humidification, gas cooling, cooling towers, coal washing, degreasing, gravel washing, dishwashing, foam control, industrial washing and water fountains.

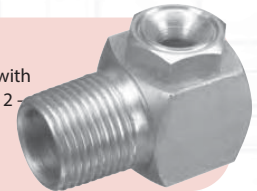


**AE Type Nozzle**

Two piece right angle design (body and cap) with no internal vanes. Available in flow sizes from 2 – 350 with a nominal spray angle of 70° - 90° depending on flow size and pressure.

**AF Type Nozzle**

Two piece right angle design (body and cap) with no internal vanes. Available in flow sizes from 2 – 250 with a nominal spray angle of 100° - 120° depending on flow size and pressure.



**Limited Sizes**



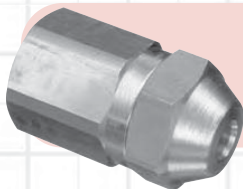
**WRW Type Nozzle**

WRW 2 – 240 available. Two piece design (body and cap) with no internal vanes. Right angle configuration. Available spray angles of 110, 115 and 140° depending upon flow size and pressure. WRW 2 – 20 available in 1/4" NPT male thread only and WRW 20 – 240 available in 3/4" NPT male thread only. Available in Nylon only.

**Limited Sizes**

**RA <sup>\*Special design</sup> Type Nozzle**

Two piece right angle design (body and cap) with no internal vanes. Available in flow sizes from 2 – 280 with a nominal spray angle of 120° - 140° depending on flow size and pressure. Patented dual swirl chamber produces "Raindrop" type spray. Available in Nylon only.



**WS Type Nozzle**

Three part construction, body, core and adaptor. Available in flow sizes from 2 – 100. Nominal spray angle 75°. Available in NPT male or female thread only.

Unless otherwise stated, all nozzles and tips are available in Brass and Stainless Steel as standard.